



Mazda Miata 2006-15 – armrest cover for the IL Motorsport armrest – installation instructions

Disclaimer: Redline Automotive Accessories Corp. (RedlineGoods) will not be held liable for any labor, incidental or consequential damages of any kind. Proceed at your own risk. Read the entire document before proceeding with your installation!

1. The IL Motorsport armrest – this is what you'll be covering.



2. Leather cover with 6/8" foam. Adhesive cement and popsticks for application.



3. Apply cement to foam and underside of leather cover.





4. And bring leather and foam together.



5. Test fit foam and cover onto the armrest, paying attention to the leather at the end, which will be inserted into the hinge in front of the hinge for a clean finish.



6. Apply glue to armrest and foam, leaving the sides free of glue. It is important to not glue the sides so the leather can be stretched down freely and attached to the underside of the armrest later on.





7. Foam glued onto armrest. Be careful to line up the back edge.



8. Lining up the back edge. The foam will be squashed down at the end. Glue the leather to the foam at the end. You have to trim a little bit of foam so that it is not visible when you press it into the gap. The leather here will be held down the gap when you glue the leather to the underside of the armrest, which is the next step.



9. Applying glue to the underside and sticking the leather down, beginning at the rear (you will trim the excess later on). Apply glue to about a third of the length, starting from the rear. You will stretch the leather down, with particular attention to the end so that it remains in place (see step 10 below).





10. Stretching the leather into place and gluing it to the underside, whilst keeping an eye on the top so that the leather remains in the gap near the hinge. The leather needs to be pulled down at a slight rearward angle at the rear edge to achieve this.



11. Glue the leather under the rear edge, so a nice clean finish is achieved as shown. I applied some glue to the sides of the rear facing edge also so the leather has a nice flat appearance here.



12. Moving down in stages, gluing the next third of the underside, until just the front end is left to do. As you move in stages, wait for the leather to be fairly stuck in place before you do the next section.





13. How the top should look at this stage. The front edge is still loose.



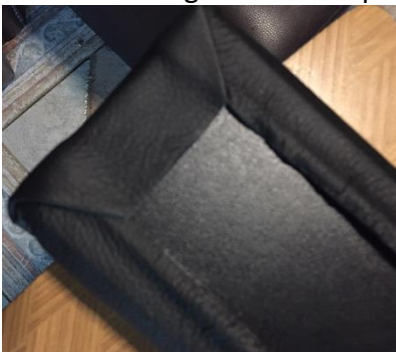
14. Glue now the rest of the underside at the front, leaving the front end flap free. This will be folded under and glued the next step.



15. Creating the front flap and applying glue



16. And folding the front flap under, as tightly as possible so that as little of this is visible on the sides as possible.





17. The front flap folded under. It does make a neat finish this way and is easy to accomplish



18. Returning to the underside to clean up. I applied here some extra glue so the leather is nicely attached to the ridge shown.



19. It should look like this at this stage. The extra leather will be trimmed in the next step.

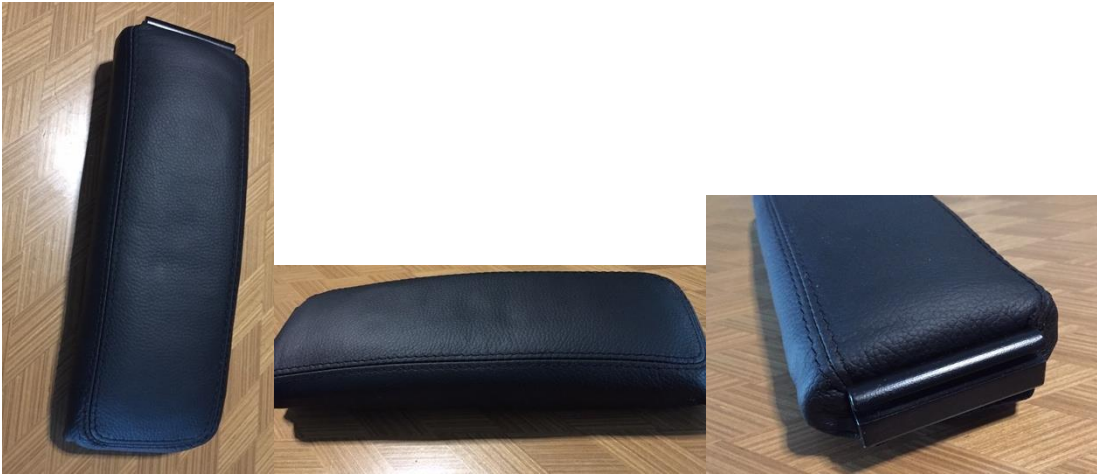


20. I trimmed the loose leather with a pair of fabric scissors.





21. The finished armrest.



22. And installed in car. Note, with the leather on the armrest there's a slight gap visible as it doesn't sit down completely but it will when you put your arm on it and it's as sturdy as ever!



Congratulations – and enjoy your new armrest cover from RedlineGoods!

Useful tip

Make sure to condition your new shift boot properly, using the proper care products for the material you've chosen for your shift boot (leather and Alcantara require different treatments) and you'll enjoy it for years!