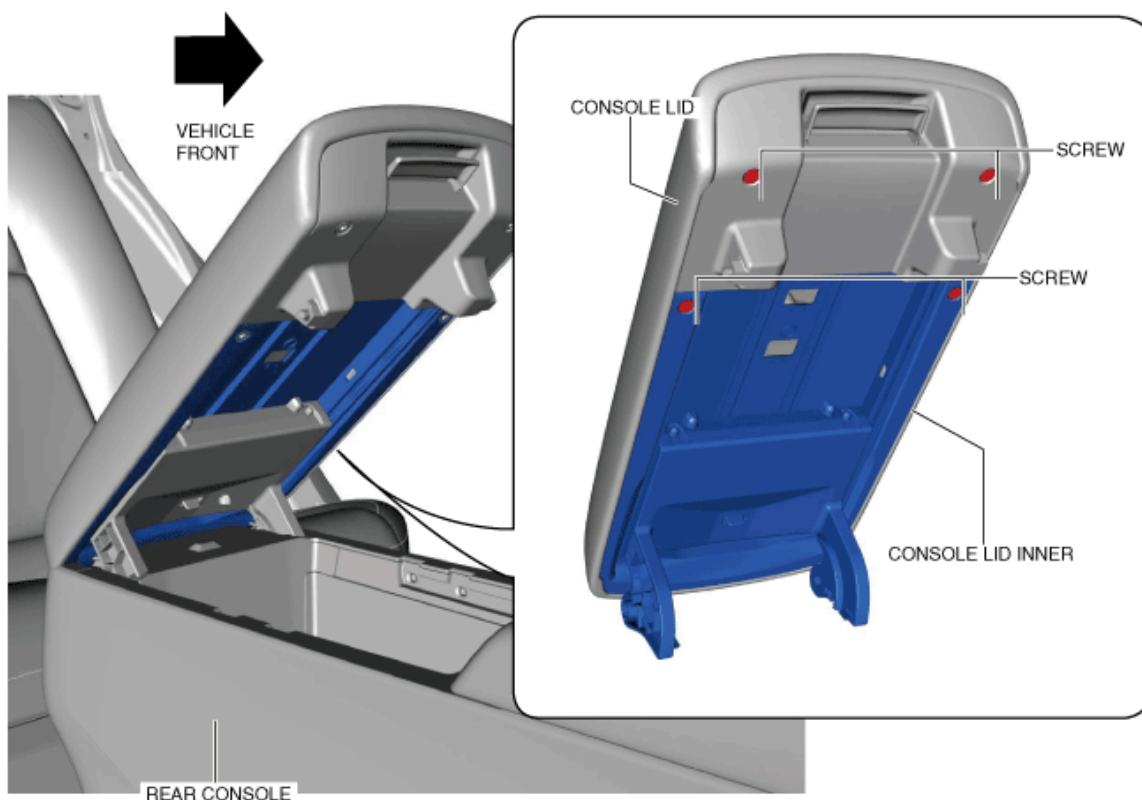


# RedlineGoods Armrest Installation Instructions for the Mazda 3 (BP)

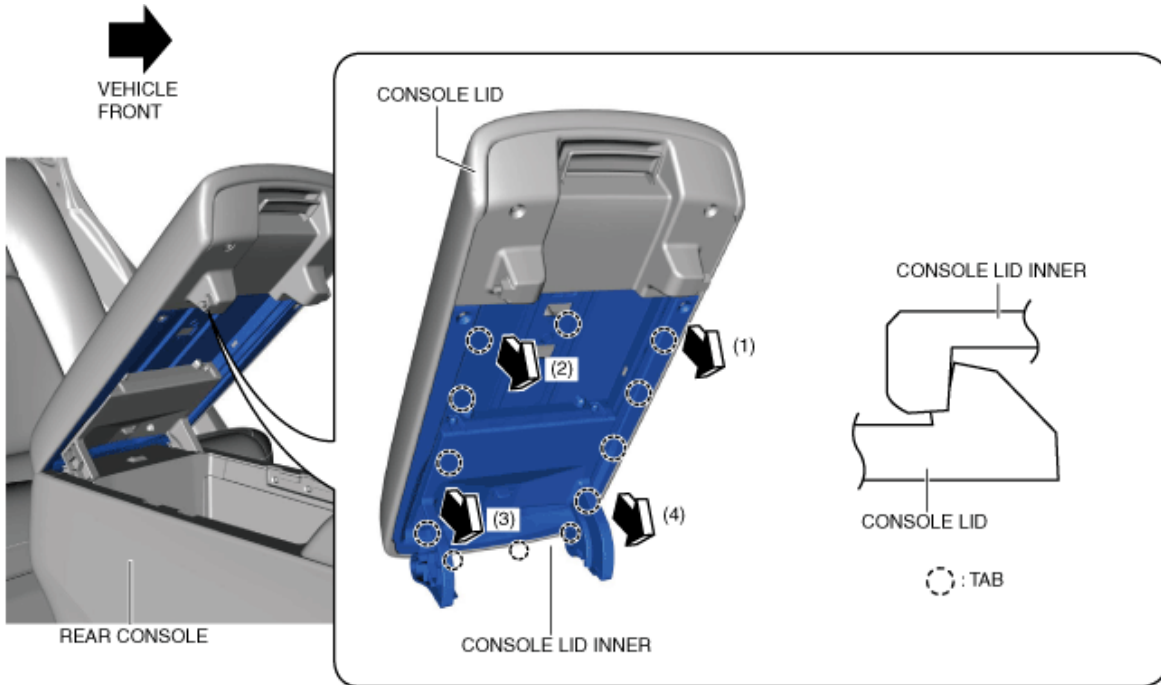
## ***Tools needed:***

- Custom made RedlineGoods Mazda 3 (BP) Armrest Cover
- Small Flathead Screwdriver
- #2 Phillips Screwdriver
- Exacto / Hobby Knife / Scissors
- Contact Cement (Barge All Purpose Cement works great)

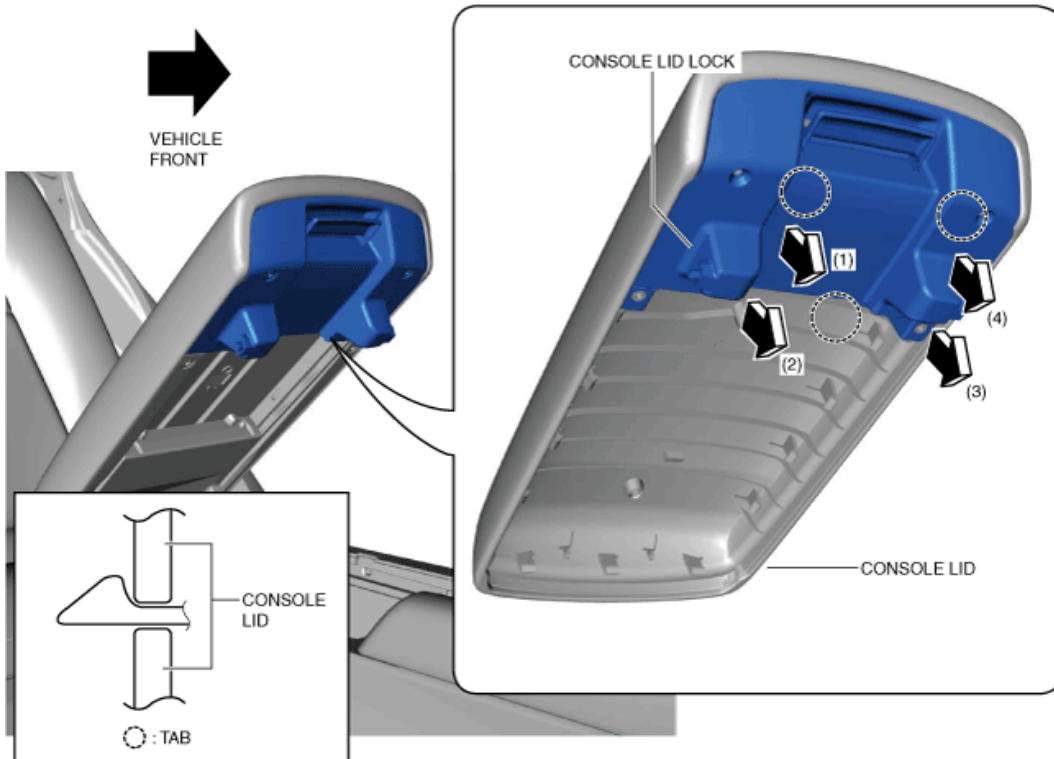
1. Open the console lid and remove the 4 phillips screws.



2. Using a remover tool or pulling carefully, move the console lid inner in the order of arrows (1), (2), (3), and (4) shown in the figure, detach the tabs, and remove the console lid inner.



- Using a remover tool or pulling carefully, move the console lid lock in the order of arrows (1), (2), (3), and (4) shown in the figure, detach the tabs, and remove the console lid lock.



4. Using a flathead screwdriver, pry and remove all staples. Then pull the cover off of the base piece.



5. Lay the cover and armrest upside down on a table. Place cement around the perimeter of the cover and the armrest. Make sure the cover is centered, push down firmly on the middle of the armrest, and work your way around, pulling tight and sticking the cover to the armrest. Make sure any slits in the leather are secured over the plastic tabs.



6. Reinstall the armrest in the opposite manner of removal.

**Useful tip**

You have installed a product made out of genuine leather. As you know, to maintain a leather product in good condition, you should take care of it. We suggest occasionally (every 4-6 week for example) applying some leather conditioner/UV protector to keep your leather from drying up in the sun and cracking.

**Redline Automotive Accessories Corp. will not be held liable for any labor, incidental or consequential damages of any kind. Proceed at your own risk.**