

Installation Guide for RedlineGoods Door Pull Covers for BMW 3-series and 4-series

Disclaimer: Redline Automotive Accessories Corp. (RedlineGoods) will not be held liable for any labor, incidental or consequential damages of any kind. Proceed at your own risk. Read the entire document before proceeding with your installation!

These instructions will show you how to recover the interior door handle trim pieces with the new covers provided. If your existing trim pieces are covered from the factory with leather, as is found on some models, it is NOT recommended to cover over the existing leather as the new cover installed on top of the factory cover material will make the trim piece too thick to re-install in your car. An example of a factory leather covered door handle trim piece is pictured here.



If you do not wish to cover your existing door handle trim pieces, genuine BMW or aftermarket replacement door handle trim pieces can be purchased from multiple vendors, either new or used. The following BMW part numbers are for the silver interior door handle trim pieces used in these install instructions:

51-41-7-260-085 (left)

51-41-7-260-086 (right)

1. Interior Door Handle Trim Removal

A video of how to remove and install the interior door trim can be seen here (with other similar videos available on the internet): <https://youtu.be/vRQp8F-Hu9E>

Using a plastic trim removal tool or similar, insert the trim tool into the small recess located on the bottom of the door handle (shown here).



Gently pry on the tool, forward and back, to separate the trim from the door handle. Once the trim piece begins to separate from the door, gently pull it completely off with your hands. Note: It is NOT recommended to use a metal screwdriver (or similar metal tool) as metal tools could possibly cause damage to the parts being removed.



Once the trim piece is removed, some of the metal retaining clips may remain on the trim piece as seen below (circled in red) and some remain on the door (red circle). If this happens, remove the metal retaining clips from the trim piece and re-install them on the door as this will aid with re-installation of the trim piece.



2. Covering the Trim Pieces

Layout your trim pieces and covers on your work surface. Take note of the left and right trim covers and match them with the corresponding left and right trim piece. It is recommended to practice positioning the covers on the trim pieces for familiarization before applying the glue. Tip: If your new trim cover has stitching, using your original trim piece as a guide, mark the new trim piece to be covered with a sharpie (or similar), before applying the contact adhesive, to help align the new trim cover.



Use a contact cement adhesive that is suitable for fabric in either spray or brush on form. It is recommended to use automotive grade contact cement adhesive to prevent the trim pieces from possibly lifting after installation. For this install, the gel formula brush on contact cement adhesive by DAP Weldwood was used. The advantage of using a brush on versus spray on contact cement is more control when applying the adhesive to both the trim piece and trim cover.

Apply the contact cement adhesive to the back of the trim cover and the trim piece. Be careful to not get the adhesive on the front side of your trim cover - but apply the adhesive as close to the edge of the cover as possible. For the trim piece, be sure to apply the adhesive around the edge of the trim piece to the underside, as you will wrap the trim cover material around the edges of the trim piece. Follow the drying instructions for the contact adhesive you used. But in general, allow the contact cement to dry to a “tacky” touch before wrapping the trim piece with the cover.

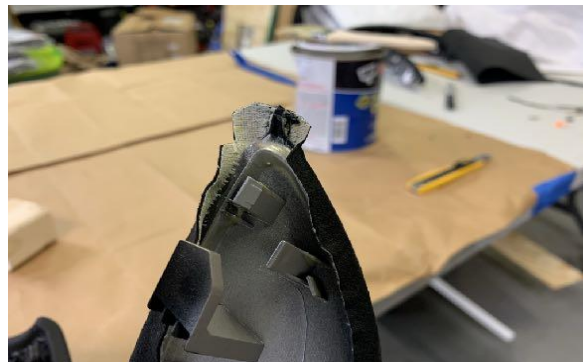
With the trim cover laying on your work surface, gently place the trim piece centered on the cover, using the alignment marks you made previously if your trim cover has stitching. Using your fingers, apply light pressure from the center making your way to the edges, smoothing out any wrinkles. Applying light pressure at this phase will allow you to lift the cover if necessary to ensure it is properly aligned. Once properly aligned, apply more pressure, working from the center to the edges, wrapping the cover around the edges of the trim piece. Take your time as you wrap the cover material around the edges, to ensure a smooth, wrinkle free wrap.



If necessary, trim any excess material around the edges. This is necessary to ensure excess cover material does not interfere with the retention clips once the trim piece is installed back in the car.



Tip: To get a professional looking appearance around the top and bottom edges, it will be necessary to make small relief cuts prior to folding the material around the edges. Examples of relief cuts are shown here. Be sure to cut small so that when you wrap the material around the edge, it will be a clean wrap, with no visible cuts from the front of the trim piece.



3. Re-Installation

Prior to installation back in the car, let the newly covered trim pieces sit for 24 hours to allow the adhesive to cure. To install, align the trim pieces back on the door handle, ensuring the metal retaining clips are aligned properly, then snap back into place.

ENJOY!

